

Parshall Elementary School Distance Learning Plan 2020-2021

[Teacher Expectations](#)
(Distance Learning)

[Distance Learning](#)
(High Risk/Critical Risk)

[Teacher Expectations](#)
(Choice Option)

CLICK ON THE LINK FOR MORE
INFORMATION
Click the School Icon to return Here

[Distance Learning](#)
(Moderate Risk)

[Teacher Expectations](#)
(Restrictions New Normal)

[COVID-19](#)
[RESPONSE TEAM](#)

[Traditional Learning](#)
w/Restrictions (low Risk)

[Instructional Model Schedules](#)

[Welcome Families](#)

[Instructional Model Response Matrix](#)

[Traditional Learning](#)
(New Normal)

[Paraprofessional Expectations](#)

[Learning Models](#)

[Attendance Procedures](#)

School Counseling
Services

Parshall School COVID-19 Response Team

Coordinator:	Shane Sagert (Superintendent)
High School Principal:	Amber Youngbird
Elementary Principal:	Anthony Esquibel
School Board Member:	
High School Counselor:	
Elementary School Counselor:	Angela Krueger

Guidance and Supports

Guidance from State
Departments

Guidance from Local Public
Health

- Mountrail County Health
- Elbowoods Health Center
- District COVID-19
Response Team
- Reopening Decision Tree

North Dakota Health Department COVID-19 Cases

- Check last updated date
- Scroll down to Count Map
(Mountrail County)
- Assess number of active cases

MHA Community Impact Dashboard



Welcome to the 2020-2021 School Year

Hello Parshall School families;

The following plan outlines our thoughts regarding the implications for teaching and learning and the requirements for maintaining the health and well being of our student, teachers, and staff. The Parshall School COVID-19 Response Team will evaluate risk level for the Parshall Community to determine our level of spread and instructional model with the guidance from state and tribal resources.

We are ready for this: The Parshall Community has demonstrated adaptability and strength in this time of crisis. All students enrolled in the Parshall School District have received Chromebooks for distance learning. We also are a one-to-one school district where every student has access to a technological device. RTC has offered internet access for households that do not have accessibility. Our Teachers have been been or will be training in all aspects for distance learning. We will provide training for families to access needed resources to supports student learning at home. Last but not least, the Parshall Elementary School has caring, compassionate, enthusiastic, education driven team that is excited to get back to teaching and learning.

Thank you to our families for sharing with the school district your preferred learning options for the upcoming school year. Your continued support and input is always welcomed and considered through our planning process.

Together we will get through this challenge. Should you have any questions, please call the Parshall Elementary School 862-3417.

Anthony Esquibel (Elementary Principal)



Parshall Elementary Response Matrix

Level of spread	New Normal	Low Risk	Moderate Risk	High Risk	Critical Risk
Instructional Model	TRADITIONAL LEARNING	TRADITIONAL LEARNING W/RESTRICTIONS	CHOICE OPTION <ul style="list-style-type: none"> • Face to Face • Distance Learning • On-site Distance Learning 	DISTANCE LEARNING	DISTANCE LEARNING

Criteria for determining level of spread.

Parshall School COVID-19 Response Team

- Guidance from State Departments
 Guidance from Local Public Health
- Mountrail County Health
 - Elbowoods Health Center
 - District COVID-19 Response Team



Coordinator: Shane Sagert (Superintendent)
 High School Principal: Amber Youngbird
 Elementary Principal: Anthony Esquibel
 School Board Member:
 High School Counselor:
 Elementary School Counselor: Angela Krueger

LEARNING MODELS

TRADITIONAL LEARNING	TRADITIONAL LEARNING W/RESTRICTIONS	CHOICE OPTION LEARNING	DISTANCE LEARNING
Students will resume instructional learning Pre-Covid 19.	Students will resume instructional learning following CDC/Health Department Social Distance Guidelines and SMART Restart Guidelines	Learning Model Options: <ul style="list-style-type: none"> ● On site (Face to Face) Instruction ● Distance Learning ● On-Site (Distance Learning) Instruction 	100% Distance Learning
	<ul style="list-style-type: none"> ● Social Distance in classrooms ● Personal Protection Equipment (Optional) ● Self Contained Classrooms. ● Modifies Lunch Schedule/Lunch in classrooms ● Education on hygiene and safety 	<p>On Site (Face to Face)</p> <ul style="list-style-type: none"> ● Social Distance in classrooms ● Personal Protection Equipment (required) ● Self Contained Classrooms ● Modifies Lunch Schedule/Lunch in classrooms ● Education on hygiene and safety ● Follow Guidelines(DOH, DOE,CDC) <p>On-Site (Distance Learning)</p> <ul style="list-style-type: none"> ● Designated area to participate in distance learning. ● Staff Supervision ● Recommended for struggling students 	Teachers On-Site Students Off -Site



Distance Learning (High Risk/Critical Risk)

Curriculum	Focus: Reading, English, Writing, Math Based on School Improvement Identification <ul style="list-style-type: none">Targeted Supports & Improvement School (TSI)
Sp. Education	<i>FOCUS:</i> IEP Goals,
Title I	<i>FOCUS:</i> Students needing Intensive supports (Math, Reading)
Assessments	NWEA (Fall) AIMSweb (within first 4 weeks of school). I-Ready Math, Success For All.
Delivery Platform	Google Classroom
Communication	Google Meets, Google Chat, Google Sites
Schedule	8:30 am-3:15-Monday-Friday
Special Subject Area	Activities to compete at home with family members.
Library	Virtual Library, Virtual Check out, Delivery, Book Club, Read Alouds



Choice Option (Moderate Risk)

Learning Models	<ul style="list-style-type: none"> • Face to Face (8:30-12:30) • Distance Learning (1:00-3:30) • On-site Distance Learning 	Delivery Platform	On-site classrooms, Google Classroom,
Curriculum	<p>FOCUS: Reading, English, Writing, Math, Social Studies and Science.</p> <p>Based on School Improvement Identification</p> <ul style="list-style-type: none"> • Targeted Supports & Improvement School (TSI) 2020-2021 	Special Subject Area	<p>1:00 pm -3:45 pm (On-Site) PE-On site Social Distance Activities (Playground) Music- Prepare for Winter Virtual Concert (School Gym) *Distance Learning Students have the choice to participate on site 8:30 am-12:30 pm (Virtual Classes) Activities to compete at home with family members.</p>
Sp. Education	<p>FOCUS: IEP Goals, On-Site Schedule,</p>	Library	Virtual Library, Virtual Check out, Delivery, Book Club, Read Alouds
Title I	<p>FOCUS: Students needing Intensive supports (Math, Reading)</p>	Speech	
Assessments	NWEA (Fall) AIMSWeb (within first 4 weeks of school). I-Ready Math, Success For All.		



Traditional Learning w/Restrictions (Low Risk)

Curriculum	All General Subject Areas
Sp. Education	<i>Resume Scheduled minutes for IEP Goals</i>
Title I	Students needing Intensive supports (Math, Reading) <ul style="list-style-type: none">• Small Group Instruction
Assessments	NWEA (Fall) AIMSweb (within first 4 weeks of school). I-Ready Math, Success For All.
Delivery Platform	General Classroom, Google Classroom, Ready Mathematics
Communication	Google Meets, ZOOM, Google Sites
Schedule	8:30 am-3:17 pm
Special Subject Area	Resume Master Schedule
Library	Resume Master Schedule



Traditional Learning (New Normal)

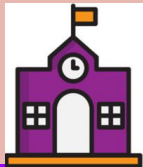
Curriculum	All General Subject Areas
Sp. Education	Resume Scheduled minutes for IEP Goals
Title I	Students needing Intensive supports (Math, Reading) <ul style="list-style-type: none">• Small Group Instruction
Assessments	NWEA (Fall) AIMSweb (within first 4 weeks of school). I-Ready Math, Success For All.
Delivery Platform	General Classroom
Communication	Google Sites
Schedule	8:30 am-3:17 pm
Special Subject Area	Resume Master Schedule
Library	Resume Master Schedule



Teacher Expectations (DISTANCE LEARNING)

DISTANCE LEARNING

Monday-Friday
(8:30-3:15)



Teacher will.....

- deliver direct instruction from their classrooms through Google Meets.
- create and follow a Daily Schedule for all subject areas.
- record direct instruction and post to Google Classroom.
- keep daily attendance and report to the Truancy Team at risk students.
- update their PowerSchool to keep parents updated on attendance and grades.
- use the following categories to track and monitor daily student expectations.
 - *Student Engagement Rubric (1-5 Scale) (20%) (Create with Staff)*
 - *Practice Work (10%)*
 - *Activities/Projects ((20%)*
 - *Assessments (50%)*
- create a 9 week curriculum map for English/Language Art and Mathematics.
- create a Google Site (Website) for classroom related information for families.
- provide students with grade level content that adheres to the North Dakota State ESSA Content Standards.
- work with school counselor to monitor students social emotional well being.
- Provide educational resources for parents and additional resources for students.

Teacher Expectations

CHOICE OPTION

**On-Site
(Face to Face)**

8:30-12:30

- Teacher will create a Daily Schedule for FOCUS Subjects
- All classes will be self contained
- Teachers will use:
Google Site (Classroom Webpage)
Google Classroom (Instructional Platform)
Zoom/Google Meets (Student Communication)
- Teachers will communicate with students on a daily basis.
- Teachers will monitor and report students' Social Emotional well being.

Distance/Virtual Learning

1:00-3:45

- Teacher will create a daily schedule for FOCUS subject
-1 hour Direct Instruction in Mathematics
-1 hour Success For All
- Teachers will use:
Google Site (Classroom Webpage)
Google Classroom (Instructional Platform)
Zoom/Google Meets (Student Communication)
- Teachers will communicate with students on a daily basis.
- Teachers will monitor and report students' Social Emotional well being.



Teacher Expectations

TRADITIONAL LEARNING W/RESTRICTIONS



Teachers will

- provide direct instruction for all subjects.
- provide students with grade level content that adheres to the North Dakota State ESSA Content Standards.
- all Classrooms will be self-contained
- establish a website for general grade level resources and communication.
- use Google classroom for content delivery.
- use ZOOM or Google Meets for daily instruction and communication with students.
- use Powerschool to track attendance.
- communicate with principal, school resource office, and school success coordinator when a student is absent for multiple days.
- use Powerschool to manage student progress on assessments, assignments, and/or activities.
- work with school counselor to monitor students social emotional well being.
- be available from 8:00-3:45 pm Monday-Friday

TRADITIONAL LEARNING

Teachers will resume Normal Operations (pre-COVID-19) with new health and safety guidelines.

Parshall Elementary Schedules

Instructional Model

TRADITIONAL LEARNING

TRADITIONAL LEARNING W/RESTRICTIONS

- CHOICE OPTION**
- Face to Face
 - Distance Learning
 - On-site Distance Learning

DISTANCE LEARNING

DISTANCE LEARNING

School Schedule

Master Schedule

Master Schedule

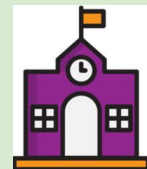
Choice Option Schedule

Follow
Master Schedule



Paraprofessional Expectations

Library (Distance Learning)	Librarian will..... <ul style="list-style-type: none">• create a <i>Google Site</i> (Library Webpage).• use <i>ZOOM/Google Meets</i> to communicate with students and families• work with teachers & Reading Coach to identify high interest books for each grade level.• provide scheduled events<ul style="list-style-type: none">-Read Alouds-Books Club		
Title I Sp. Education (all Levels of spread)	Paraprofessional staff will..... <ul style="list-style-type: none">• provide Face to Face supports for students identified as needing supports.• provide in classroom support<ul style="list-style-type: none">-Virtual Learning Schedule <ul style="list-style-type: none">• PE (Organized Play OutDoors)• Music (Gym)	Corie Haugeberg Jessie Gilbertson Penny Bolkan Averyl Taft Jhufel Querikiol Brooke Locken	(PreK & Kindergarten) (1st Grade) (2nd Grade) (3rd Grade) (4th Grade) (5th Grade)



Attendance Procedures

8:35-10:00
10:00-12:00

Tardy
Absent AM

Check out
Check out

12:00-2:00
After 2:00

Absent PM
Full Day Present

General Attendance Policies and Procedures

- Powerschool is our data source for Face to Face and Virtual Learning attendance.
- All students attending Parshall Elementary School will be in attendance either face to face or virtually.
- All students will have access to instruction.
- Teachers will notify the Truancy Team when a student has been absent for 3 days.
- Families are required to notify the school secretary when a child is unable to attend instruction that day (face to face and distance learning students)

Parshall Elementary School 862-3417



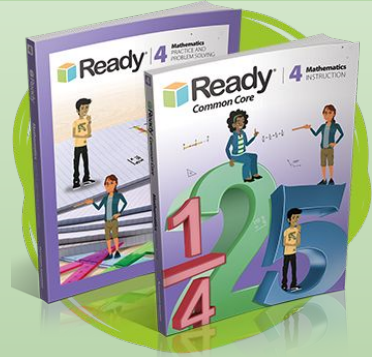
Attendance Policy Considerations: (Low & Moderate Risk)

- Families that make decisions to keep students at home due to a pandemic/epidemic should be addressed on a case by case basis by building principals
- Encourage families with symptomatic students to stay home.
- Suspend attendance incentives/testing requirements as needed to discourage sick students attending school
- Teachers will enter AM attendance for Face to Face attendance and PM attendance for Virtual Learning.

Attendance During Distance Learning: (High Critical Risk)

- All registered students are required to attend Distance Learning Classes.
- Attendance will be taken in the AM and PM
- All General Attendance Policies and Procedures will be followed.
- Truancy Team will assess absenteeism and make need recommendations.

High-Quality, Effective, Standards-Based Education



The Parshall Elementary School has been identified as Targeted Supports and Improvement School.

The Curriculum focus will be based on the North Dakota ESSA identification for school improvement in the following areas and aligned to ND State Standards.

- English/Language Arts
 - Success For All
- Mathematics
 - Ready Mathematics

Direct instruction in Science, Social Studies, Health and Art will provide weekly.

The following special subject areas will be provided to students at designated times.

- PE-Face to Face/Virtual
- Music- Face to Face/Virtual
- Library- Scheduled Times
- Counseling-Scheduled/Individual


Success for All
FOUNDATION®



Special Education

Students that are currently on 504 plans will continue to have accommodations met for individual cases. Teachers will need to provide additional time or separate video conferencing if needed. Students with medical needs will be assisted at home by whom the family chooses.

All special education students (PreK-12) will be provided the same accommodations and modifications outlined in their IEP. Special education teachers will work with regular education staff to determine the appropriate modifications for any online materials. Help may be provided via email, zoom, or google hangout.

Additional requests may be requested by parents or special education teachers if needed. Case by Case depending guidelines written in students 504 or IEP.

Hosting an IEP Meeting:

PSD will host meetings through zoom, google hangouts, or phone calls. Specials education teachers will continue to send out notices to parents and follow special education protocols.

PSD will follow the resource provided by IDEA

<https://sites.ed.gov/idea/idea-files/q-and-a-providing-services-to-children-with-disabilities-during-the-coronavirus-disease-2019-outbreak/#Q-A-1>



School Counseling Services

Parshall Public Schools will continue to provide services to students through emails and video conferences. The school counselor will provide discussion questions in a google classroom setting, schedule times for google hangouts, or zoom for students to interact with the counselor. The school counselor will follow the guidelines provided by the virtual guidelines below.

Counseling Grades K-12

The school counselor will provide a google classroom setting. The classroom will provide students with opportunities to advise students on college/career readiness, and to promote academic scholarship assistance if needed.

https://www.schoolcounselor.org/asca/media/asca/PositionStatements/PS_Virtual.pdf

<https://www.schoolcounselor.org/asca/media/asca/home/EmergencyShutdown.pdf>



Technological Device & Internets Access

TECHNOLOGICAL DEVICE

Every Student will need a Technological Device to receive direct instruction, assignments and assessments.

- Chromebook
- Ipad
- Laptop
- DeskTop
- Supported Game Consoles
- Cell Phones (Not Recommended)

All students enrolled into the Parshall School District during the 2019-2020 school was gifted a Chromebook for the Three Affiliated Tribes-Lucky Mound Segment.

Newly Enrolled Students & returning student that do not have a tech device will be issued a Parshall Elementary School chromebook. Student and Guardians will enter a Computer Usage Agreement that will be reviewed with building principal.

INTERNET ACCESS (Update)

Local Internet Provider: Reservation Telephone Company (RTC).

RTC is working with the school district to provide student's homes with internet connection.

RTC will provide free internet access to families until the pandemic is over, or until otherwise stated.

Request Internet Access: Parents/Guardians need to contact the Elementary school with the following information.

- Head of Household
- School Enrolled Students Names
- Physical Address



Families that do not have the capability to access the internet will be provided alternative practices. Alternative practices will be based on the health and safety of our families.

Professional Development

All educational staff will be trained in the following areas

1. District Policies and Procedures
2. Powerschool
 - a. Attendance
 - b. Grade Book
3. ELA & Mathematics Curriculum
 - a. Success for All
 - b. Ready Mathematics
 - c. FOSS
 - d. McGraw/Hill Social Studies
4. Google Suits (Educational)
 - a. Google Classroom
 - b. Google Sites
 - c. Google Meets
 - d. Google Slides
5. Zoom
6. AIMSWeb
7. MAPS (NWEA)
8. Distance Learning Strategies
9. CDC Guidelines for Health and Safety
10. School Health and Safety plan



Communication

Teachers & Staff

All teachers will.....

- use the following formats to communicate school related information to families.
 - Phone/Text
 - Parent Email
 - Teacher Website
- use Google Classroom to communicate assignments and instructional information to students
- use Google Meets to provide Direct instruction.
- provide families with a progress report as scheduled.
- be available by appointment for ZOOM/Google Meets for parents concerns.

Staff

Staff will communicate by.....

- using SWIFT to communicate school related information with families and staff.
- using the following formats to communicate school related information virtually
 - Google Classroom (Staff Classroom)
 - ZOOM/Google Meets
- having weekly Principal meetings to discuss concerns, glows and grows.
- having grade level meetings for alignment and planning.
- having regularly Reading Coaches Meetings to discuss student placement and progress.
- Participating in Surveys to gain feedback and suggestions for improvement.

